

WorkTime® - Powerful Computer Monitoring Software System

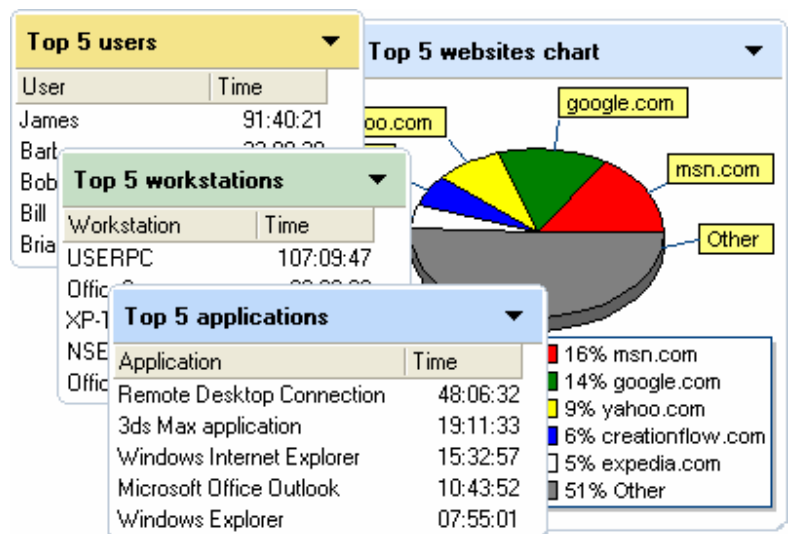
WorkTime® Corporate is a computer monitoring system for Windows, Linux and Windows Terminal Services/Citrix Server. Reliable and powerful, designed to monitor sites with more than 5000 workstations/users. **Field-tested.**

Tasks Solved with WorkTime

- ✓ Internet usage monitoring
- ✓ Computer usage monitoring
- ✓ Employee monitoring
- ✓ Attendance monitoring
- ✓ Performance monitoring
- ✓ Software usage monitoring
- ✓ Terminal Services, Citrix monitoring

Why WorkTime

- ✓ Designed for heavy loads
- ✓ Field-tested on sites with more than 5000 user connections
- ✓ Created to monitor, but not to spy
- ✓ Monitoring results are stored in the company's location
- ✓ Customizable
- ✓ Competitive prices



How it works

Automatic invisible monitoring

Monitoring is performed in the background and is completely invisible to the employee. It automatically records user activities on corporate computers.

What is recorded

WorkTime records time of computer related activities (including the event and duration of the activity), application/document names, executable paths, web-sites/URLs, system user login names, computer names. Recorded statistics show the actual time of each activity. Activity time refers to the amount of time the application/document window is active (selected) and mouse or keyboard activity is present.

Monitoring, but not spying, employees' privacy

WorkTime is strictly monitoring software. It does not support any spying functionality that may infringe on employees' privacy. It does not capture screens content, keystrokes, passwords, web-site user IDs, documents/emails/chats content.

Security, data storage location

WorkTime is a software system, not a web service. The whole system is installed on customer's computers. All information is stored on the customer's server.



Reliability & performance

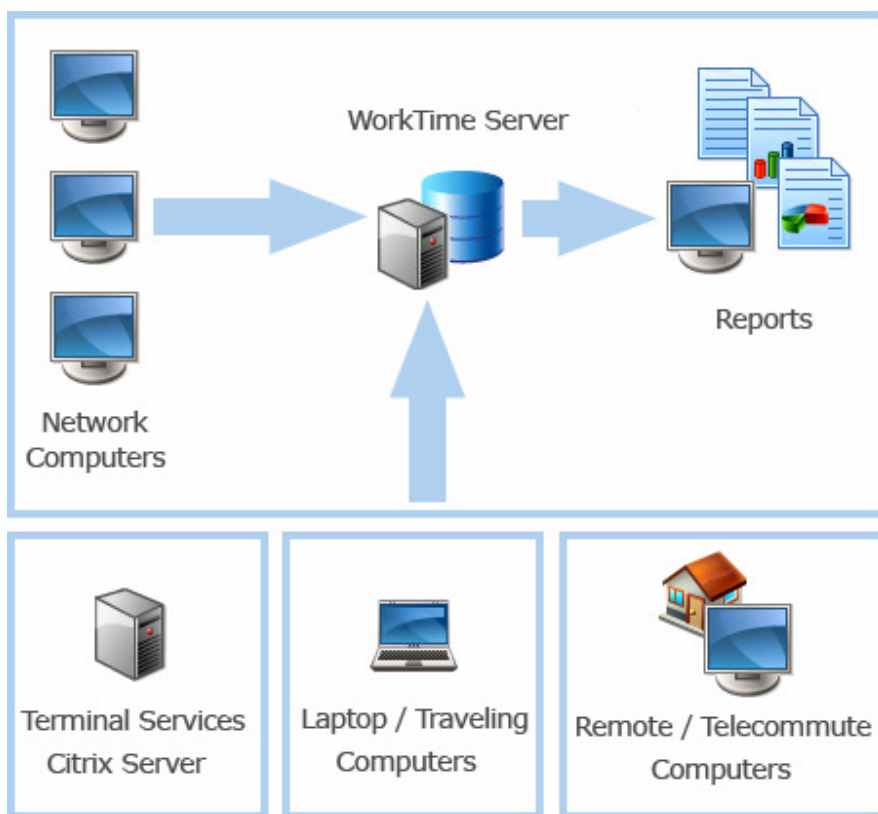
WorkTime is designed specifically for heavy loads numbering in the hundreds and thousands of clients. WorkTime requires very little system resources and is optimized to process large volumes of information.

System, network, installation

WorkTime is a client-server software system intended to monitor computer usage in a local or distributed network. The system consists of a server application, administrative/reporting application, client application and database.

- The server application is used to process requests to the database.
- The administrative/reporting tool is used to setup the system and build reports.
- The client application performs monitoring. It is invisible to the user and requires very little system resources.

The client application is installed on each computer that is to be monitored. Installation is performed without displaying messages or windows and without user interaction during its progress; it is silent and unattended and is suitable for automatic installing processes.



Windows Terminal Services, Terminal/Citrix Server

WorkTime is designed to monitor computer usage under Windows Terminal Services (Remote Desktop Services) and Citrix Server (Citrix XenApp, Citrix MetaFrame Server, Citrix Presentation Server).

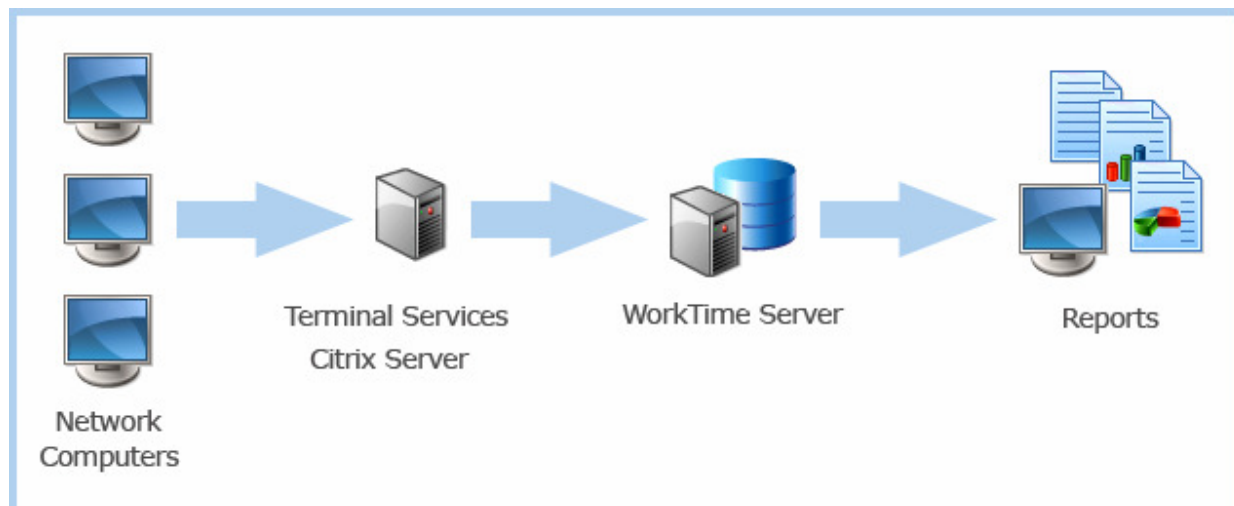
WorkTime Corporate system consists of a server application, administrative/reporting application, client application and database. The client application should be installed on each server that is to be monitored. The client application is launched on every user connection, automatically recording all user activities during the session.



NESTERSOFT INC.
PERSONAL AND BUSINESS SOFTWARE

Phone: 1-877-717-TIME
sales@nestersoft.com
www.nestersoft.com

NesterSoft Inc.
5100 Rutherford Rd. #12303
Woodbridge, ON, L4H 2T3
Canada



Compatible with

Database: MS SQL Server and Firebird open-source database.

Windows: Windows XP, 2000, 2003, 2008, Vista, 7, Server 2008R2 both 32 and 64 bits.

Citrix/Terminal: WorkTime Corporate is also compatible with all versions of Citrix Server (Citrix XenApp, Citrix MetaFrame Server, Citrix Presentation Server), Windows Terminal Services, Terminal Server.

Linux: WorkTime Corporate is also compatible with Ubuntu (both 32 and 64 bit) and any 2.6 kernel based Linux.

Reliability & performance

WorkTime is designed specifically for heavy loads numbering in the hundreds and thousands of clients. WorkTime requires very little system resources and is optimized to process large volumes of information.

Reporting system

WorkTime proposes powerful and highly customizable reports designed for large volumes of information. Custom reports are available to suit client's needs exactly.

Licensing and fees

WorkTime® is software, installed on customer's computers. WorkTime is licensed per user (for Terminal/Citrix Server the price can be calculated based either on users amount or on servers amount). There is a one time license fee and no monthly charges. The license includes one year of technical support and upgrades to all new WorkTime versions. Once purchased the license never expires and can be used without any additional charges.

Prices information: <http://www.nestersoft.com/worktime/register.shtml>

Evaluation

You can evaluate WorkTime Corporate for 30 days before making any purchase decisions. The trial version of WorkTime Corporate provides full functionality allowing you to test every feature it has to offer.

Please request an evaluation to try WorkTime Corporate: http://www.nestersoft.com/worktime/request_evaluation.shtml

1-877-717-TIME | sales@nestersoft.com | www.nestersoft.com

© NesterSoft Inc. All Rights Reserved. All NesterSoft product names are service marks, trademarks or registered trademarks of NesterSoft Inc. All other product names and trademarks are the property of their respective holders.