



WorkTime® - Powerful Computer Monitoring System

WorkTime® Corporate is a computer monitoring system for Windows and Windows Terminal Services/Citrix Server. Reliable and powerful, designed to monitor sites with more than 5000 workstations/users. **Field-tested.**

Tasks Solved with WorkTime

- ✓ Internet usage monitoring
- ✓ Computer usage monitoring
- ✓ Employee monitoring
- ✓ Attendance monitoring
- ✓ Software usage monitoring
- ✓ Terminal Services, Citrix monitoring

Why WorkTime

- ✓ Designed for heavy loads
- ✓ Field-tested on sites with more than 5000 user connections
- ✓ Created to monitor, but not to spy
- ✓ Monitoring results are stored in the company's location
- ✓ Customizable
- ✓ Competitive prices

How it works

Automatic invisible monitoring

Monitoring is performed in the background and is completely invisible to the employee. It automatically records computer related activities in one centralized location.

System, network, installation, data storage location

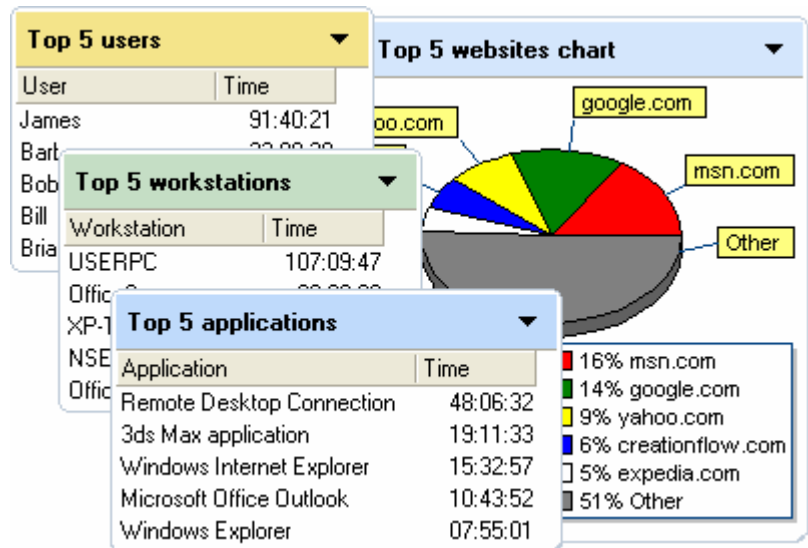
WorkTime is a client-server software system intended to monitor computer usage in a local or distributed network. **WorkTime is installed on customer's computers. All monitoring results are stored on the customer's site.**

Reliability & performance

WorkTime is designed specifically for heavy loads numbering in the hundreds and thousands of clients. WorkTime requires very little system resources and is optimized to process large volumes of information.

Licensing and fees

WorkTime® is software, installed on customer's computers. WorkTime is licensed per user (for Terminal/Citrix Server the price can be calculated based either on users amount or on servers amount). There is a one time license fee and no monthly charges. The license includes one year of technical support and upgrades to all new WorkTime versions. Once purchased the license never expires and can be used without any additional charges. Prices information: <http://www.nestersoft.com/worktime/register.shtml>



What is recorded

WorkTime records time of computer related activities, application/document names, executable paths, web-sites/URLs, system user login names, computer names.

Monitoring, but not spying

WorkTime is strictly monitoring software. It does not support any spying functionality that may infringe on employees' privacy. It does not capture screens content, keystrokes, passwords, web-site user IDs, documents/emails/chats content.

Reporting system

WorkTime proposes powerful and highly customizable reports designed for large volumes of information. Custom reports are available to suit client's needs exactly.